

MATERIAL LEGEND			
ABBR	DESCRIPTION	ABBR	DESCRIPTION
AC	SUSPENDED ACOUSTIC CEILING PANELS	GWBFR	GYPSUM WALLBOARD, FIRE RESISTANT (5/8") TYPE-X
CNC	CONCRETE (SEALED)	GWBUR	GYPSUM WALLBOARD, WATER RESISTANT (5/8")
CPT	CARPET TILE	IMP	INSULATED METAL PANEL
CT	CERAMIC TILE	PT	PAINT
EXP	EXPOSED STRUCTURE	RB	RUBBER BASE
GUB	GYPSUM WALLBOARD 5/8" UGN	SM	SHEET METAL

FINISH LEGEND			
SYMBOL	DESCRIPTION	SYMBOL	DESCRIPTION
	ACOUSTIC TILE MANUFACTURER: ARMSTRONG STYLE: DUNE 2x2 - BEVELED TEGULAR COLOR: WHITE		PAINT MANUFACTURER: SHERWIN-WILLIAMS STYLE: SW 2820 DOWNING EARTH
	CARPET TILE MANUFACTURER: LEE'S STYLE: DN433 - FINE CLASS, 24x24 COLOR: 434 - ARISTOCRATIC BROWN		PAINT MANUFACTURER: SHERWIN-WILLIAMS STYLE: SW 2806 ROCKWOOD BROWN
	CONCRETE MASONRY UNIT MANUFACTURER: RCP BLOCK & BRICK STYLE: SPLIT FACE COLOR: LA FAZ		RUBBER BASE MANUFACTURER: ROPPE STYLE: 4' COVE BASE COLOR: F194 BURNT UMBER
	METAL ROOFING MANUFACTURER: AEP SPAN STYLE: HIGH BEAM PANEL COLOR: ZINC GREY		CERAMIC TILE MANUFACTURER: DAL TILE STYLE: 4x4 SEMI-GLOSS COLOR: * 015 BISCUIT (FIELD) * 011 VERMILLION (ACCENT) GROUT: LATICRETE, #20 LIGHT GREY
	METAL WALL PANEL MANUFACTURER: AEP SPAN STYLE: PRESTIGE COLOR: SIERRA TAN		PLASTIC LAMINATE MANUFACTURER: NEVAMAR STYLE: EM6001T AGED ELEMENTS
	PAINT MANUFACTURER: SHERWIN-WILLIAMS STYLE: SW 2829 CLASSICAL WHITE		

RESERVE BUILDING - ROOM FINISH SCHEDULE																						
ROOM NUMBER	DESCRIPTION	FLOOR		BASE		WAINSCOT		WALLS				CEILING			CASEWORK				REMARKS			
		MATERIAL	COLOR	MATERIAL	COLOR	MATERIAL	COLOR	NORTH	EAST	SOUTH	WEST	MAT'L	COLOR	HEIGHT	C.TOP	COLOR	CABINET	COLOR				
101	APPARATUS BAY	CNC	CNC-1	CNC	CNC-1	--	--	IMP	--	IMP	--	IMP	--	GUB	PT-1	EXP	--	VARIES	--	--	--	1
102	WORK ROOM	CNC	CNC-1	RB	RB-1	--	--	GUB	PT-1	GUB	PT-1	GUB	PT-1	IMP	--	GUB	PT-1	9'-0"	SM	SM-1	WD-1	1 2
103	TURNOUT LOCKER	CNC	CNC-1	RB	RB-1	--	--	GUB	PT-1	GUB	PT-1	GUB	PT-1	GUB	PT-1	GUB	PT-1	9'-0"	--	--	--	1 2
104	COMPRESSOR RM	CNC	CNC-1	RB	RB-1	--	--	GUB	PT-1	GUB	PT-1	GUB	PT-1	GUB	PT-1	GUB	PT-1	9'-0"	--	--	--	1
105	HALL	CNC	CNC-1	RB	RB-1	--	--	GUB	PT-1	GUB	PT-1	GUB	PT-1	IMP	--	GUB	PT-1	9'-0"	--	--	--	1
106	REST ROOM	CNC	CNC-1	CT	CT-1	CT	CT-1	GWBUR	PT-1	GWBUR	PT-1	GWBUR	PT-1	GWBUR	PT-1	GUB	PT-1	8'-0"	--	--	--	1 2
201	STORAGE	CNC	CNC-1	RB	RB-1	--	--	IMP	--	GUB	PT-1	GUB	PT-1	GUB	PT-1	EXP	--	VARIES	--	--	--	1
202	STORAGE	CNC	CNC-1	RB	RB-1	--	--	GUB	PT-1	GUB	PT-1	GUB	PT-1	IMP	--	EXP	--	VARIES	--	--	--	1
PH-100	PUMP HOUSE	CNC	CNC-1	--	--	--	--	CMU	CMU-1	CMU	CMU-1	CMU	CMU-1	CMU	CMU-1	--	--	--	--	--	--	--

- 1 PAINT FINISH : SEMI-GLOSS FINISH
- 2 REFER TO INTERIOR ELEVATIONS FOR ADDITIONAL INFORMATION

B1 MATERIAL & FINISH LEGEND
A6.1 SCALE : NONE

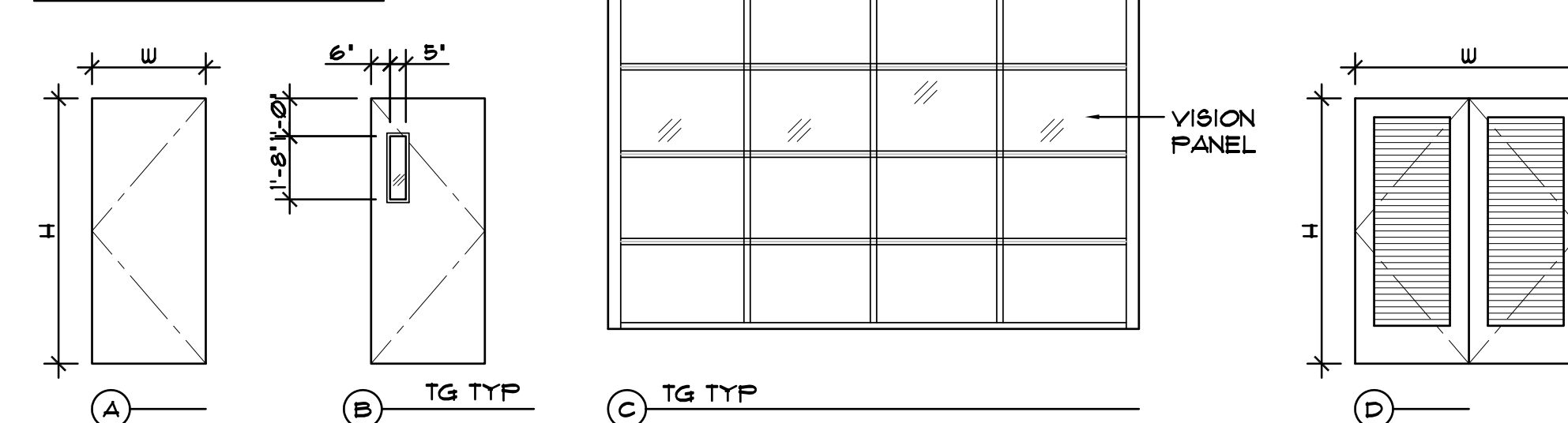
B2 RESERVE BUILDING - FINISH SCHEDULE
A6.1 SCALE : NONE

DOOR SCHEDULE																	* GENERAL CONTRACTOR SHALL FIELD VERIFY ALL DIMENSIONS AND DETAILS.	
DOOR		FRAME					DETAIL				HARDWARE		REMARKS					
SYMBOL	TYPE	WIDTH	HEIGHT	ELEV	THICK	MAT'L	FINISH	COLOR INT/EXT	LOUVER SIZE	MAT'L	FINISH	COLOR		HEAD	HINGE JAMB	OTHER JAMB	THRESHOLD	HARDWARE GROUP
101A	SINGLE	4'-0"	7'-0"	B	1 3/4"	HM	PAINT	PT-2	--	HM	FACTORY	PT-2	A3/A1J	A3/A1J	A3/A1J	--	1	
101B	SECTIONAL	14'-0"	14'-0"	C	--	HM	FACTORY	PT-2	--	--	--	--	A1/A1J	--	--	--	5	
101C	SECTIONAL	14'-0"	14'-0"	C	--	HM	FACTORY	PT-2	--	--	--	--	A1/A1J	--	--	--	5	
101D	SECTIONAL	14'-0"	14'-0"	C	--	HM	FACTORY	PT-2	--	--	--	--	A1/A1J	--	--	--	5	
101E	SECTIONAL	14'-0"	14'-0"	C	--	HM	FACTORY	PT-2	--	--	--	--	A1/A1J	--	--	--	5	
101F	SINGLE	3'-0"	7'-0"	A	1 3/4"	HM	PAINT	PT-2	--	HM	FACTORY	--	A2/A1J	A2/A1J	A2/A1J	--	2	
101G	SINGLE	3'-0"	7'-0"	A	1 3/4"	HM				HM	PT	PT-2	A2/A1J	A2/A1J	A2/A1J	--	2	
102A	SINGLE	4'-0"	7'-0"	B	1 3/4"	HM	PAINT	PT-2	--	HM	PT	PT-2	A3/A1J	A3/A1J	A3/A1J	--	3	
102B	SINGLE	3'-0"	7'-0"	A	1 3/4"	HM	PAINT	PT-2	--	HM	PT	PT-2	A3/A1J	A3/A1J	A3/A1J	--	4	
103A	SINGLE	4'-0"	7'-0"	B	1 3/4"	HM	PAINT	PT-2	--	HM	PT	PT-2	A3/A1J	A3/A1J	A3/A1J	--	3	
105A	SINGLE	4'-0"	7'-0"	A	1 3/4"	HM	PAINT	PT-2	--	HM	PT	PT-2	A2/A1J	A2/A1J	A2/A1J	--	2	
106A	SINGLE	3'-0"	7'-0"	A	1 3/4"	HM	PAINT	PT-2	--	HM	PT	PT-2	A2/A1J	A2/A1J	A2/A1J	--	6	
PH100	PAIR	6'-0"	7'-0"	D	1 3/4"	HM	PAINT	PT-2	RULLY	HM	PT	PT-2	B1/A1J	B1/A1J	B1/A1J	--	1	

DOOR NOTES

- 1 TOILET ROOM ISA SIGNAGE AND TEXT ON WALL ADJACENT TO DOOR. SEE
- 2 PROVIDE ISA SYMBOL ON DOOR
- 3 PROVIDE ROOM IDENTIFICATION SIGNAGE, VERIFY TEXT WITH OWNER.

DOOR TYPES



GENERAL DOOR NOTES

- 1. ALL DOORS AND DOOR FRAMES SHALL RECEIVE SEMI-GLOSS PAINT FINISH
- TG=TEMPERED GLASS

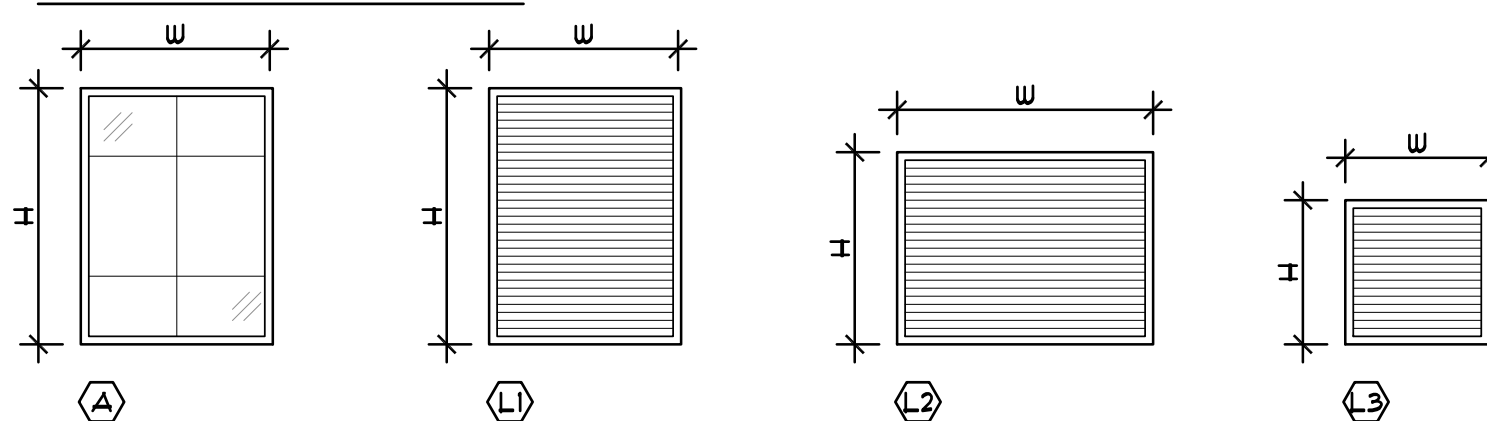
C1 RESERVE BUILDING - DOOR SCHEDULE
A6.1 SCALE : NONE

WINDOW SCHEDULE													* GENERAL CONTRACTOR SHALL FIELD VERIFY ALL DIMENSIONS AND DETAILS.	
WINDOW		FRAME			DETAIL				GLAZING		REMARKS			
SYMBOL	WIDTH	HEIGHT	TYPE	GLAZ	MAT'L	FINISH	COLOR	HEAD	JAMB	JAMB		SILL	MIN U-VALUE	MIN SHGC
	4'-0"	5'-4"	FIXED	DUAL TINTED	ALUM	FACTORY	CLEAR ANOD	B2/A1J	B2/A1J	B2/A1J	B2/A1J	02B	02S	
	4'-0"	5'-4"	--	--	MTL	FACTORY	--	B3/A1J	B3/A1J	B3/A1J	B3/A1J	--	--	
	5'-4"	4'-0"	--	--	MTL	FACTORY	--	B3/A1J	B3/A1J	B3/A1J	B3/A1J	--	--	
	3'-0"	3'-0"	--	--	MTL	FACTORY	--	B3/A1J	B3/A1J	B3/A1J	B3/A1J	--	--	

GENERAL WINDOW NOTES

- 1 REFER TO WINDOW DETAILS FOR ACTUAL WINDOW SIZE
- 2 TEMPERED GLAZING SHALL HAVE PERMANENT IDENTIFICATION

WINDOW TYPES



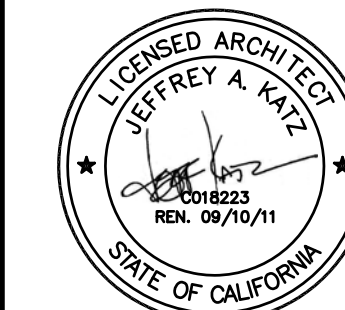
D1 RESERVE BUILDING - WINDOW SCHEDULE
A6.1 SCALE : NONE

MODULAR OFFICE - ROOM FINISH SCHEDULE																					
ROOMS	DESCRIPTION	FLOOR		BASE		WAINSCOT		WALLS				CEILING			CASEWORK				REMARKS		
		MATERIAL	COLOR	MATERIAL	COLOR	MATERIAL	COLOR	NORTH	EAST	SOUTH	WEST	MAT'L	COLOR	HEIGHT	C.TOP	COLOR	CABINET	COLOR			
OFFICE	CPT	CPT-1	RB	RB-1	--	--	GUB	PT-1	GUB	PT-1	GUB	PT-1	GUB	PT-1	AC	AC-1	8'-0"	--	--	--	1
OFFICE OPEN	CPT	CPT-1	RB	RB-1	--	--	GUB	PT-1	GUB	PT-1	GUB	PT-1	GUB	PT-1	GUB	PT-1	8'-0"	--	--	--	1
COFFEE	CPT	CPT-1	RB	RB-1	--	--	GUB	PT-1	GUB	PT-1	GUB	PT-1	GUB	PT-1	GUB	PT-1	8'-0"	--	--	--	1
HALL	CPT	CPT-1	RB	RB-1	--	--	GUB	PT-1	GUB	PT-1	GUB	PT-1	GUB	PT-1	GUB	PT-1	8'-0"	--	--	--	1
RESTROOM	CNC	CNC-1	CT	CT-1	CT	CT-1	GWBUR	PT-1	GWBUR	PT-1	GWBUR	PT-1	GWBUR	PT-1	GWBUR	PT-1	8'-0"	--	--	--	1

- 1 PAINT FINISH : SEMI-GLOSS FINISH

MODULAR CLASSROOM - ROOM FINISH SCHEDULE																					
ROOMS	DESCRIPTION	FLOOR		BASE		WAINSCOT		WALLS				CEILING			CASEWORK				REMARKS		
		MATERIAL	COLOR	MATERIAL	COLOR	MATERIAL	COLOR	NORTH	EAST	SOUTH	WEST	MAT'L	COLOR	HEIGHT	C.TOP	COLOR	CABINET	COLOR			
OFFICE	CPT	CPT-1	RB	RB-1	--	--	GUB	PT-1	GUB	PT-1	GUB	PT-1	GUB	PT-1	AC	AC-1	8'-0"	--	--	--	1
TRAINING ROOM	CPT	CPT-1	RB	RB-1	--	--	GUB	PT-1	GUB	PT-1	GUB	PT-1	GUB	PT-1	GUB	PT-1	8'-0"	--	--	--	1
RESTROOM	CNC	CNC-1	CT	CT-1	CT	CT-1	GWBUR	PT-1	GWBUR	PT-1	GWBUR	PT-1	GWBUR	PT-1	GWBUR	PT-1	8'-0"	--	--	--	1

D1 MODULAR OFFICE AND CLASSROOM - FINISH SCHEDULES
A6.1 SCALE : NONE



JEFFREY A. KATZ ARCHITECTURE
6353 Del Cerro Boulevard San Diego, CA 92120
Tel (619) 095-9177
www.jeffkatzararchitecture.com



PROJECT:
Heartland Regional Fire and Public Safety Training Center

DESCRIPTION: DATE:
BUILDING DEPT SUBMITTAL 05/10/10
ISSUED FOR BID 11/29/10

ISSUED FOR BID

PROJECT NO: 061001
APPROVED BY: JK
CHECKED BY: JK
DRAWN BY: CAD

SHEET TITLE:

SCHEDULES

SHEET: 51
SHEET NUMBER: OF 103

A6.1